



PPRTA QUARTERLY REPORT
El Paso County Public Services Department

2nd QUARTER – 2011
August 2011



Grading Road Platform at Stapleton Road (West)

Engineering Division
3275 Akers Drive
Colorado Springs, Colorado 80922
(719) 520-6460
www.elpasoco.com

PROJECTS AND PROGRAM UPDATE
TABLE OF CONTENTS

2nd Quarter Executive Summary	3
Capital Programs PPRTA Budget Summary	4

Project Status Reports
Capital Projects

Hodgen Road Corridor Improvements	5-6
Marksheffel Road	7-8
County Line Road	9
Meridian Road (North)	10
Meridian Road (South)	11
Stapleton Drive (West)	12

Maintenance Program

Concrete Surface Drainage Program	13
Gravel Road Projects	14
Asphalt Overlay Projects	14

Executive Summary

The second quarter saw continued progress with the County's PPRTA capital projects, as well as significant progress on the 2011 maintenance program.

The **Hodgen Road** project began in March 2011. Phase one of the projects was paved during the second quarter and the intersection of Hodgen/Black Forest was reopened to traffic. The project is on schedule to be complete by the end of 2011.

The **Marksheffel Road** four lane project which includes the improvements between Colorado Tech Drive and North Carefree Circle continues to make substantial progress. Construction of the northbound lanes was completed and traffic was shifted onto the new northbound lanes in June. Construction is expected to be complete in the fall of 2011.

The design for the **County Line Road** project is 90% complete. A contract amendment with Stantec Consulting to finalize the design, prepare construction documents, and to provide property acquisition services is being prepared for consideration at the August PPRTA Board meeting. During this quarter, the Board approved an increase in the County Line Road budget with the addition of \$525,000 from the 2010 supplemental revenues.

Construction began on the **Meridian Road (North)** project in September 2010. The project will upgrade the southbound lanes from Woodmen to Stapleton and adds a second southbound left turn lane at Woodmen. Paving on phase two (Eastonville Road to Woodmen Hills Drive) was completed during this period and utility relocations on phase three (Eastonville Road to Woodmen Road) have commenced. This project is scheduled to be completed in the summer of 2011.

The corridor analysis has been completed and the preferred alternative has been identified for the **Meridian (South)** project. The preliminary design has been completed and the 30% plan review meeting has been scheduled for August. A contract amendment for final design is expected to be brought forth for consideration during the third quarter.

The construction contract was awarded in September 2010 for the two-lane connection of **Stapleton Drive** from Eastonville Road to US 24 in Falcon. Utility relocations were completed during the second quarter and work continues on the subsurface stabilization and drainage improvements. Paving is expected commence in August and the project is expected to be completed in the summer of 2011.

Significant work was completed in the second quarter with respect to the **2011 maintenance program**. The Concrete Surface Drainage Program, Gravel Road Projects and the Asphalt Overlay Projects are all underway. Asphalt overlay was completed at seven locations, two roads were graveled and 1595 Linear Feet of Curb and Gutter, 2360 Linear Feet of Sidewalk, 36 Linear Feet of cross pans and 4 pedestrian ramps were constructed.

Capital Programs PPRTA Budget Summary

The following table summarizes the 2011 program budget for each project and identifies the current status of the project.

* Supplemental 2010 revenues applied this quarter used to increase budgets for County Line Rd and Stapleton (West) projects

PPRTA- Group A- Capital Project Ten year Summary – 2011 Budget							
Project Name	Original Project Budget	2011 Revised Project Budget	Cumulative Budget Thru 2011	Budgeted - 2012	Budgeted 2013-2014	Total Budgeted	Status
Baptist-Hodgen Connection	1,070,000	2,062,003	2,062,003			2,062,003	Completed
Akers Drive	2,300,000	1,714,614	1,714,614			1,714,614	Completed
South Metro Accessibility	20,000,000	25,581,582	25,031,821	219,761		25,251,582	
Phase I- Westmeadow Br.							Completed
Phase II- SH 115 to B St.							Completed
Phase III- PPCC to I-25							Completed
Phase IV- B St to PPCC							Completed
County Line Road Upgrade I-25 to Furrow Road	2,150,000	4,267,553	2,827,188	1,440,365		4,267,553	Design *
Meridian Road Widening Woodmen Rd to Rex Rd	5,500,000	7,613,409	5,045,079	2,568,330		7,613,409	Construction
Hodgen Road Upgrade SH 83 to Eastonville ***	12,000,000	16,665,180	16,465,180	200,000		16,665,180	Construction
Baptist Road Widening I-25 to Tari Dr	6,200,000	8,773,026	8,773,026			8,773,026	Completed
Struthers Extension/Jackson Creek Falcon Nest to Baptist Road	2,200,000	3,714,500	3,714,500			3,714,500	Completed
Marksheffel Road Widening & Extension PAFB to Black Forest Road	13,500,000	19,298,835	19,298,835			19,298,835	Construction
Baptist Road Widening Mitchell Ave to I-25	750,000	1,044,729	200,000	844,729		1,044,729	Planning
Baptist Rd RR Xing Overpass at BNSF/ UP / Monument Creek	2,600,000	3,621,727	148,308	973,419	2,500,000	3,621,727	Planning
Meridian Road Extension Falcon Hwy to US 24	375,000	513,411	513,411			513,411	Design
Stapleton Drive (West)- Eastonville Rd to US 24	1,250,000	2,371,215	2,371,215			2,371,215	Construction *
Marksheffel Road Widening Mesa Ridge Pky to Hwy 24	22,800,000	31,759,762	0	7,410,573	24,349,189	31,759,762	Planning
Stapleton Drive (East)- US 24 to Curtis Road	1,250,000	1,741,215	0	641,215	1,100,000	1,741,215	Planning

Project Status Reports
Capital Projects

Hodgen Road Corridor Improvements

Project Description: This project consists of safety improvements to upgrade Hodgen Road to two lane arterial standards from State Highway 83 through the Black Forest intersections.

Project Team:

Designer: URS Corporation

Construction Management: Wilson and Company

Construction: R.E. Monks Construction Company

Cost Summary:

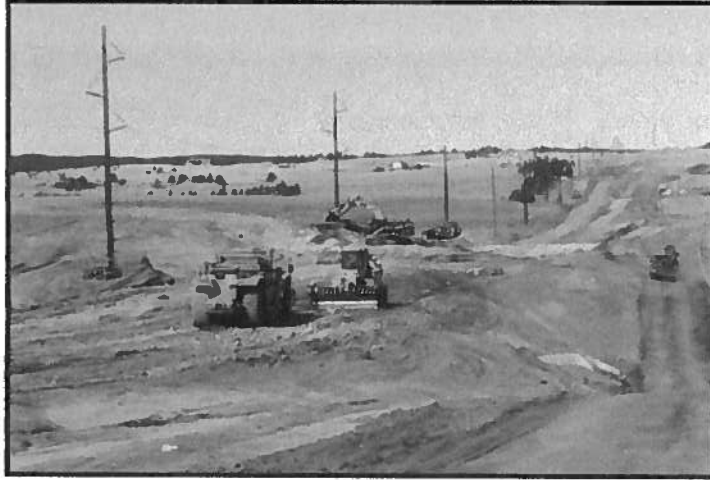
- PPRTA budget - \$16,665,180
- Total estimated project cost - \$13.14 M
- Design/Property Acquisition Contracts authorized - \$1,835,194
- Estimated property acquisition cost - \$712,000
- Utility relocation design agreements authorized - \$251,436
- Utility relocation construction authorized - \$4,209,354
- Construction management authorized - \$775,737
- Construction authorized - \$5,312,858

Progress/Status:

- Due to the significant grade changes, the majority of the Hodgen project has been closed to through traffic for Phase 1 and Phase 2.
- Phase 1 (between Farrar Drive and Black Forest Road) was paved and the intersection of Black Forest/Hodgen was opened to traffic in June.
- With limited options, the Phase 1 detour included approximately 9 miles of gravel and paved roads.
- County forces were required to maintain the Phase 1 detour route once a week and after rain events to keep the gravel surfaces passable for the significant traffic volume.
- With the bottom two lifts of asphalt in place on Phase 1, the Black Forest Road intersections were opened and Phase 2 detour was put in place.
- The Phase 2 detour includes approximately 7 miles of paved roads.
- Work commenced on Phase 2 (from SH 83 to Farrar) which includes utility relocation and grading. Paving on Phase 2 is expected to commence in early October.
- Property acquisition is nearly complete, with two parcels remaining.

Schedule/Target Dates:

- Construction – The project will be substantially complete in November 2011.



Roadway Construction looking west along Hodgen Road

Marksheffel Road

Project Description: This PPRTA project will expand Marksheffel Road to a four lane principal arterial between Dublin and Colorado Tech Drive. Ultimately this road is planned to be a six lane principal arterial roadway. Although preliminary design has been completed for the entire stretch, current program funding is not sufficient to accomplish the widening for the entire length. The first phase of construction will build the improvements between Colorado Tech Drive and North Carefree. Future phases will depend on additional funding being identified.

The first phase of construction has been awarded to R.E. Monks Construction and construction is underway. The road will be reconstructed to provide a four lane curb and gutter section with a raised center median. Auxiliary and bike lanes will be provided as required, and the intersection at Marksheffel and Constitution will be reconstructed with new signals to accommodate the widened roadway. The construction will include a storm drain system as well as two water quality ponds. The vertical profile of the expanded roadway will be revised as required and will entail the rebuilding of the intersection of Marksheffel and North Carefree. The new four lane section will transition back to the existing two lane section just north of this intersection.

There are significant utility relocations and new installations required in this section to accomplish the improvements. The improvements have required that additional ROW and easements be obtained along both sides of the corridor to facilitate the improvements.

Project Team:

Designer: -Wilson & Company - (Constitution to Dublin)
Designer: - Matrix Design Inc. - (Colorado Tech to Constitution)
Construction Management: Jacobs Engineering
Construction Contractor: R.E. Monks Construction

Cost and Schedule Summary:

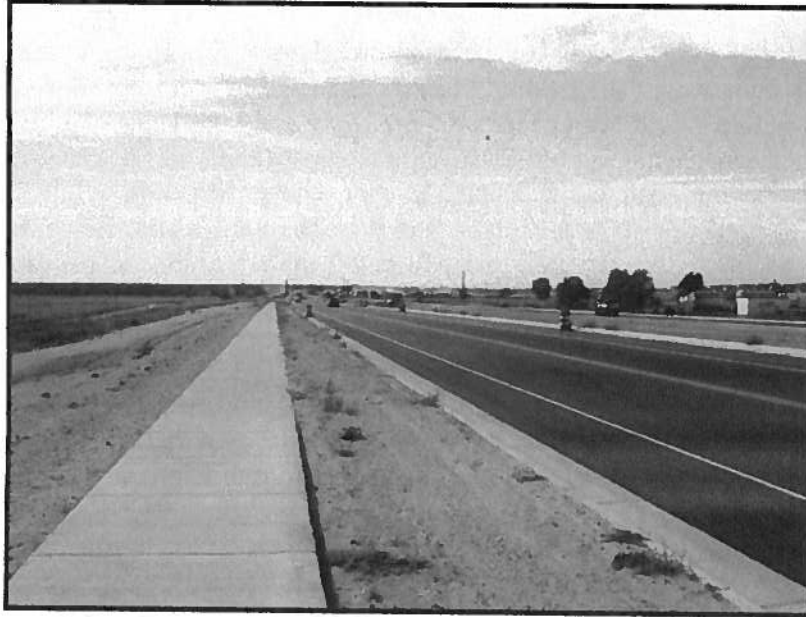
- PPRTA budget - \$19,298,835
- Contracts authorized - \$11,745,220
- Utility Reimbursement Agreements Authorized – \$3,942,057
- Property Acquisition – (paid or checks requested) - \$3,367,904
- Property acquisition – 2009/2010/2011
- Utility Relocation –2010/2011
- Construction – 2010/2011

Progress/Status:

- The construction contract was awarded to R.E. Monks in May with the contractor mobilizing on site after the 2010 Memorial Day weekend.
- Construction of storm sewer system including inlets was completed.
- Construction of the northbound lanes was completed except for the top mat of asphalt which will be completed after the southbound lanes are constructed. This work included cement stabilization of the subgrade, installation of curb, gutter and

sidewalk, paving of the two bottom mats of asphalt, and temporary striping and signing.

- Additional utility conflicts with CSU gas and Qwest were resolved.
- Both northbound and southbound traffic were shifted onto the new northbound lanes on Saturday June 11th.
- Construction commenced on the southbound lanes including removal of the existing roadway asphalt and preparation of the subgrade.



New north bound lanes between Constitution and North Carefree

County Line Road (I-25 to Furrow Road)

Project Description: This project will institute safety improvements along the corridor between I-25 and Furrow Road to include adding shoulders, revisions to the vertical profile and horizontal alignments, drainage improvements, providing turn lanes at key intersections and major reconstruction and widening of the intersection at Furrow Road

Project Team:

Designer: Stantec Consulting

Cost Summary:

- PPRTA budget - \$4,267,553.00
- Contracts authorized - \$503,055.00
- Amounts invoiced - \$481,459.89
- Property Acquisition- 2011/2012
- Utility Relocation- 2012
- Construction- 2012/2013

Progress/Status:

- Planned project improvements will include adding shoulders, reconfiguring the horizontal and vertical profiles in the area just west of Furrow Road and realigning the intersection at Furrow Road including providing turn lanes to accommodate the future traffic needs. Improvements in the vicinity of Furrow road related to shifting the intersection and revising the horizontal and vertical alignments and providing the needed turn lanes will require obtaining additional right of way and easements from several adjacent property owners both within El Paso County and Douglas County. Some of the property impacts to accomplish these improvements are significant.
- Acquisition of right of way and easements from the conservation easements in Douglas County on the north side of County Line Road will also be required for the shoulder widening improvements.
- The Board approved an increase in the County Line Road budget with the addition of \$525,000 from the 2010 supplemental revenues.
- A contract amendment with Stantec Consulting finalize the design, prepare construction documents, and to provide property acquisition services is being prepared for consideration at the August PPRTA Board meeting.

Meridian Road (North)

Project Description: This project included overall corridor analysis and preliminary design between Rex Road and Woodmen. The interim project now under construction will replace the southbound lanes between Stapleton and Woodmen. The interim project will also add an additional southbound left turn lane at Woodmen. The intersection at Londonderry and Meridian will be signalized.

Project Team:

Designer: URS Corporation

Construction Contractor: Rocky Mountain Materials and Asphalt, Inc.

Construction Management: El Paso County Engineering Division

Cost and Schedule Summary:

- PPRTA budget - \$7,613,409
- Total estimated project cost - \$4,554,932
- Design Contract authorized - \$1,497,378
- Property acquisition authorized – \$2,875
- Utility relocation design agreements authorized – \$67,500
- Utility relocation construction authorized – \$540,613
- Construction authorized - \$2,446,566

Progress/Status:

- Phase two (Eastonville Road to Woodmen Hills Drive) was paved during the second quarter.
- Utility relocations on phase three (Eastonville Road to Woodmen Road) have commenced.
- Components for the signal at the intersection Londonderry and Meridian have been ordered and the signal is expected to be installed in August.
- Property acquisitions are nearing completion with one parcel outstanding.

Schedule/Target Dates

- The project will be substantially complete in 2011



Newly paved and striped Southbound Meridian just North of Woodmen Hills Drive

Meridian Road (South)

Project Description: This project is for the realignment of Meridian Road between US-24 and Falcon Highway in conjunction with the Falcon Park and Ride Project.

Project Team:

Designer: HDR

Cost and Schedule Summary:

- PPRTA budget - \$513,411.00
- Federal funds/local match: \$1,221,000.00/\$305,250.00. This includes anticipated funds from two federal grants under the Congestion Mitigation and Air Quality (CMAQ) Program and the Transportation Enhancement (TE) Program. The County will provide the local match portion of these grants.
- Contracts authorized- \$179,077.80 (corridor planning and engineering)
\$166,674.00 (preliminary design)

Progress/Status:

- Site development alternative was chosen. Corridor Planning and Engineering has been completed. Preliminary Engineering contract awarded in 2010 and design is underway.
- Federal grants will require an Intergovernmental Agreement (IGA) with Colorado Department of Transportation (CDOT) before funds become available. IGA has been approved by CDOT and El Paso County.
- The 30% preliminary design is has been completed and a design review meeting with stakeholders has been scheduled for August. A contract extension to commence final design will be presented in the third quarter.
- It is anticipated that funding will not be sufficient to cover construction of all the improvements required. The Meridian Road intersection with State Highway 24 is beyond the scope and funding for this project, but is be critical for traffic operations. The initial efforts will be focused on identifying the needed improvements and configuration and carrying the design as far as possible, while strategizing on an implementation plan.



Looking south east at the future location of the intersection

Stapleton Drive (West)

Project Description: Stapleton Drive currently terminates East of Eastonville Road. The project extends Stapleton to the East making the initial two-lane connection with US Highway 24. Turn lanes and widening are included on US Highway 24 to accommodate the new intersection.

Project Team:

Designer: JR Engineering

Construction Contractor: Rocky Mountain Materials and Asphalt, Inc.

Construction Management: El Paso County Engineering Division

Cost and Schedule Summary:

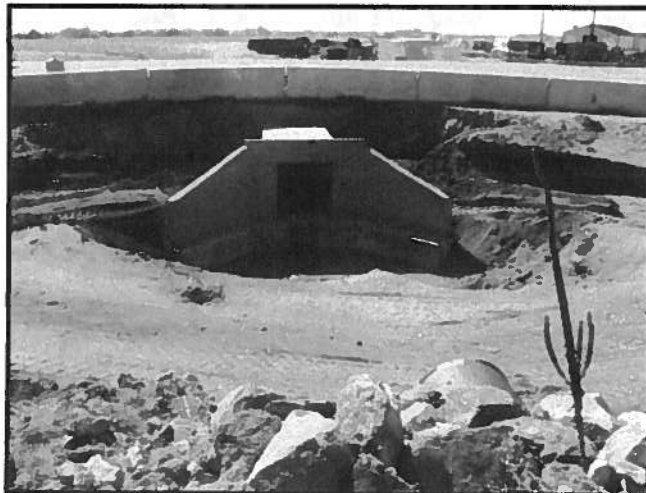
- PPRTA budget - \$2,371,215
- Total estimated project cost - \$2,188,587
- Design Reimbursements authorized - \$221,552
- Property acquisition authorized – \$2,505
- Utility relocation construction authorized – \$66,574
- Construction authorized - \$1,897,956

Progress/Status:

- Utility relocations have been completed.
- Property acquisitions are complete.
- Concrete box culvert construction was completed during this period and storm sewer system was installed.
- Grading is currently in progress and paving is expected to commence in August.

Schedule/Target Dates

- The project will be substantially complete in fall of 2011.



4'x4' reinforced Concrete Box Culvert extension at HWY 24

Maintenance Projects

AA Construction Co. started the 2011 concrete drainage project (Awarded amount of \$592,101.05) on May 16, 2011.

Concrete Surface Drainage completed in 2nd Quarter

Location

9905 Chasefield Drive	15275 Jessie Drive
11366 San Luis Peak	15245 Churchill Place
Sunset Crater & Painter Rocks	15225 Churchill Place
Rio Secco & Winged Foot	15215 Bovary Court
9034 Royal Melbourne	15510 Curwood Drive
9089 Kingstone Heath	Wellshire & Ascot
8359 Fortsmith Drive	1519 Maxwell Street
Mclaughlin & Maybeck	1720 Keswick
2180 Piros Drive	1239 Hartford Street
1635 Piros Drive	Maxwell & Coventry
1725 Piros Drive	25 Minden Drive
7278 Sioux Circle S.	26 Clover Circle West
1855 Pima Drive	305 Chamberlain Avenue
1930 Okeechobe Drive	2040 Broman Court
1640 Yakima Drive	2005 Nielson Court
1310 Commanchero Drive	1959 Chamberlain South
1346 Commanchero Drive	1964 Chamberlain South
1360 Commanchero Drive	1970 Chamberlain South
7075 Chippewa Drive	1495 Peterson Road
6815 Parkridge Court	1588 Nokomis Drove
6789 Mission Road	6826 Noble Street
1189 Nez Perce	

We were able to complete 1595 Linear Feet of Curb and Gutter, 2360 Linear Feet of Sidewalk, 36 Linear Feet of cross pans and 4 pedestrian ramps in the second quarter.



2040 Broman Court - Before & After

Roads Graveled in 2nd Quarter

<u>Location</u>	<u>Limits of Construction</u>
Tahosa Lane	Shoup Road to Peregrine Way
Ramah Highway	Highway 94 to Judge Orr Road

Asphalt Overlay completed in 2nd Quarter

<u>Location</u>	<u>Limits of Construction</u>
Meridian Road	U.S. Highway 24 to Swingline Road
McLaughlin Road	Woodmen Road to Midnight Road
Judge Orr Road	Ellicott Highway to Calhan Highway
Falcon Highway	Rio Road to Good Fortune Road
Buckboard	Falcon Highway to 100' north
Falcon Highway	Ellicott Highway to Peyton Highway
Ellicott Highway	Garrett Road to Judge Orr Road



Asphalt Overlay on Judge Orr Road