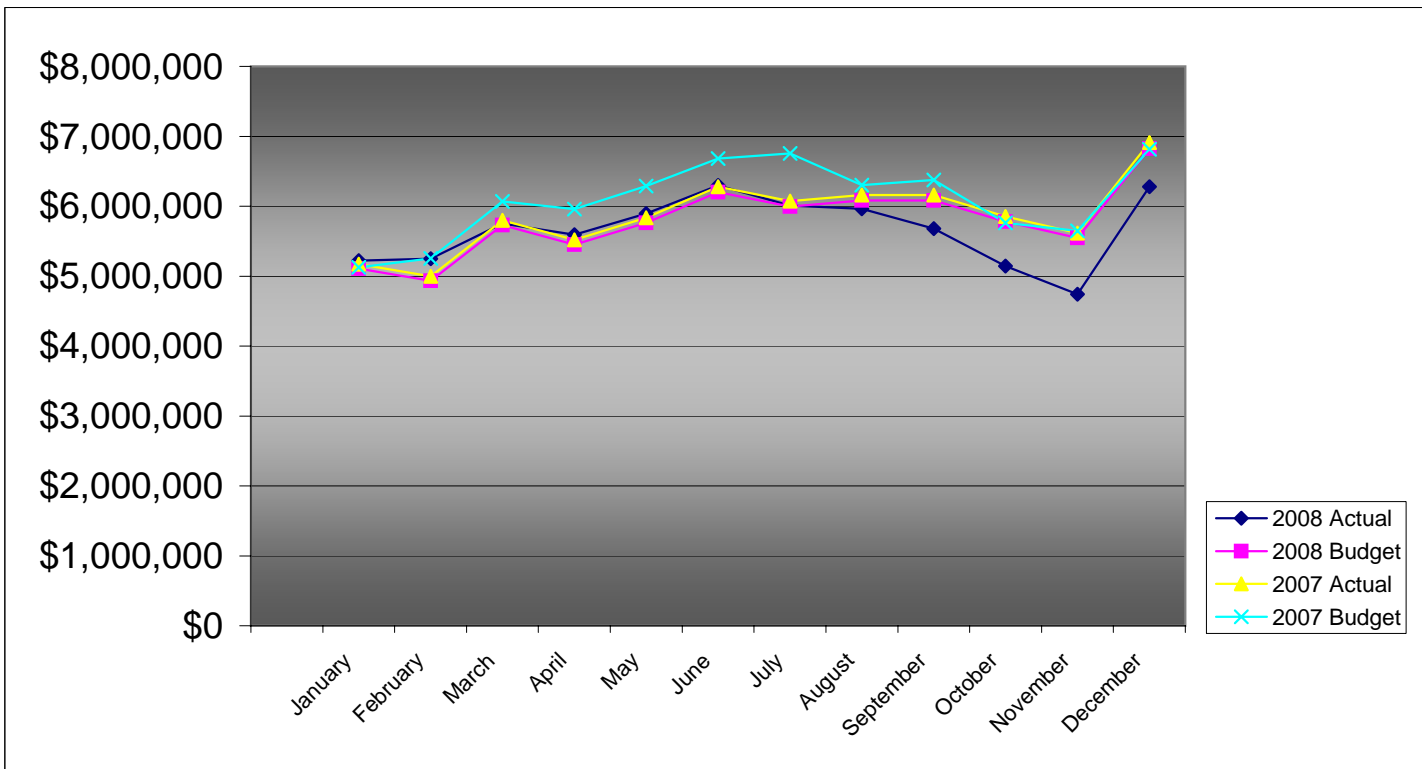


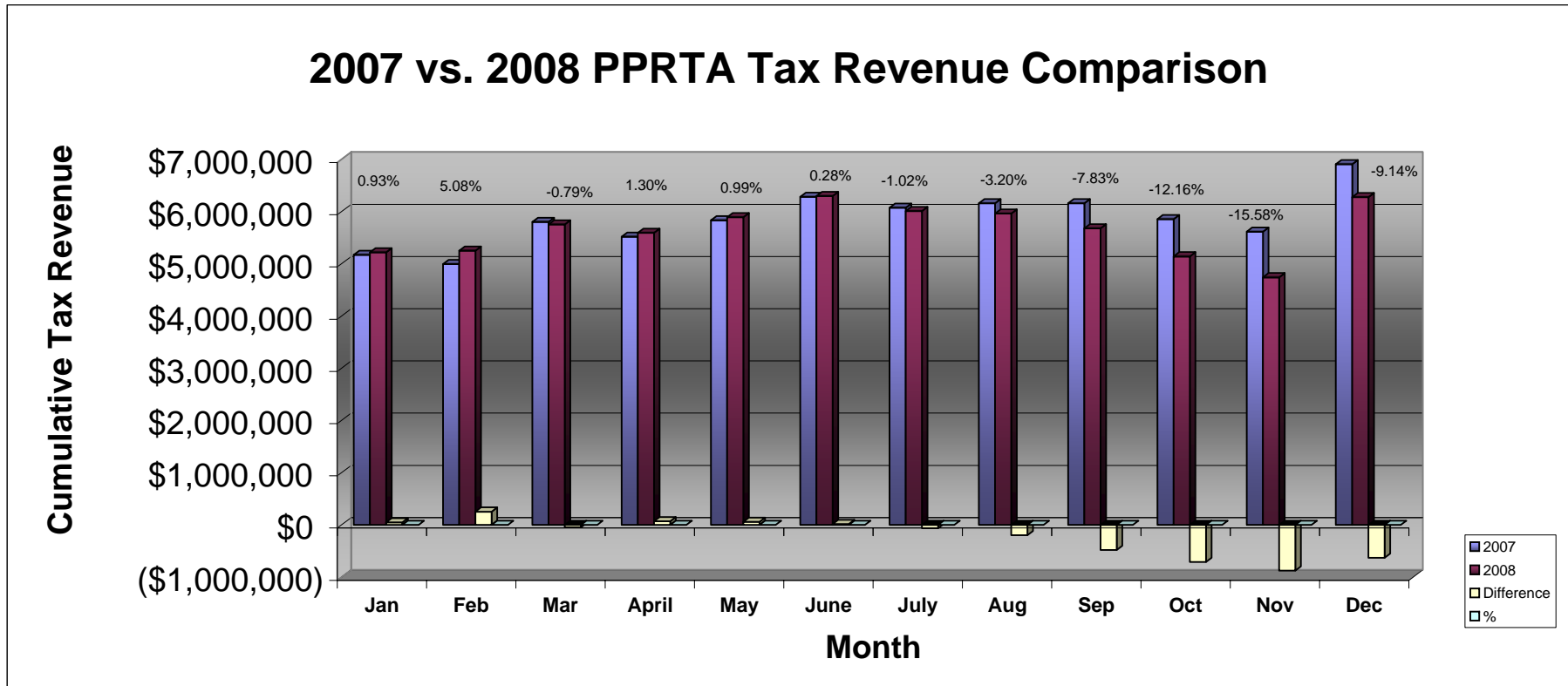
**PIKES PEAK RURAL TRANSPORTATION AUTHORITY
2008 SALES TAX BUDGET COMPARISON TO ACTUAL**

	-----Monthly-----			-----Cumulative Year-To-Date-----			2007 Actual
	Actual	Budget	Difference	Actual	Budget	Difference	
January	\$5,221,759	\$5,109,102	\$112,657	\$5,221,759	\$5,109,102	\$112,657	\$5,173,846
February	5,249,512	4,933,186	316,326	10,471,271	10,042,288	428,983	4,995,700
March	5,754,876	5,728,253	26,622	16,226,147	15,770,541	455,605	5,800,843
April	5,591,885	5,451,113	140,772	21,818,032	21,221,655	596,377	5,520,191
May	5,893,191	5,762,494	130,697	27,711,223	26,984,149	727,074	5,835,518
June	6,298,814	6,202,535	96,279	34,010,037	33,186,683	823,353	6,281,135
July	6,010,406	5,996,561	13,845	40,020,443	39,183,244	837,198	6,072,551
August	5,961,874	6,081,986	(120,112)	45,982,317	45,265,230	717,086	6,159,058
September	5,678,068	6,083,364	(405,296)	51,660,385	51,348,595	311,790	6,160,454
October	5,142,309	5,780,884	(638,575)	56,802,694	57,129,479	(326,785)	5,854,141
November	4,741,984	5,546,949	(804,965)	61,544,678	62,676,428	(1,131,750)	5,617,241
December	6,278,607	6,823,571	(544,964)	67,823,285	69,500,000	(1,676,714)	6,910,041
Year Total	\$67,823,285	\$69,500,000	(\$1,676,715)	\$67,823,285	\$69,500,000	(\$1,676,714)	\$70,380,719



**Pikes Peak RTA
Sales and Use Tax Comparison for 2007 and 2008**

	Jan	Feb	Mar	April	May	June	July	Aug	Sep	Oct	Nov	Dec	Total
2007 Sales & Use Tax receipts	5,173,846	4,995,700	5,800,843	5,520,191	5,835,518	6,281,135	6,072,551	6,159,058	6,160,454	5,854,141	5,617,241	6,910,041	70,380,719
Use tax	494,165	398,691	431,728	414,031	494,810	519,689	442,162	405,323	468,743	299,499	269,157	486,777	5,124,775
Sales tax	4,727,594	4,850,821	5,323,148	5,177,854	5,398,381	5,779,125	5,568,244	5,556,551	5,209,325	4,842,810	4,472,827	5,791,830	62,698,510
2008 Sales & Use Tax receipts	5,221,759	5,249,512	5,754,876	5,591,885	5,893,191	6,298,814	6,010,406	5,961,874	5,678,068	5,142,309	4,741,984	6,278,607	67,823,285
\$ change 2007 to 2008	47,913	253,812	(45,967)	71,694	57,673	17,679	(62,145)	(197,184)	(482,386)	(711,832)	(875,257)	(631,434)	(2,557,434)
% monthly change	0.93%	5.08%	-0.79%	1.30%	0.99%	0.28%	-1.02%	-3.20%	-7.83%	-12.16%	-15.58%	-9.14%	
Cumulative % change		2.97%	1.60%	1.52%	1.41%	1.20%	0.86%	0.31%	-0.65%	-1.82%	-3.03%	-3.63%	





Pikes Peak Rural Transportation Authority
Revenue and Expense Summary
For Year End December 31, 2008
As of December 31, 2008
Modified Cash Basis¹
(in dollars)

	Year-to-date Actual	Year-to-date Budget	Percent of YTD Budget Complete	Annual Budget Including Carryover	Actual Difference from Budget	Percent of Budget Complete
Revenue						
Tax Collections:						
Capital:						
Town of Green Mountain Falls	\$8,406	\$8,614	98%	\$8,614	(\$208)	98%
City of Manitou Springs	42,465	43,508	98%	43,508	(1,043)	98%
City of Colorado Springs	24,655,140	25,261,035	98%	25,261,035	(605,895)	98%
El Paso County	12,327,570	12,630,518	98%	12,630,518	(302,948)	98%
	<u>37,033,581</u>	<u>37,943,675</u>	98%	<u>37,943,675</u>	<u>(910,094)</u>	98%
Maintenance:						
Town of Green Mountain Falls	38,060	38,996	98%	38,996	(936)	98%
City of Manitou Springs	245,260	251,287	98%	251,287	(6,027)	98%
City of Colorado Springs	17,773,511	18,210,291	98%	18,210,291	(436,780)	98%
El Paso County	5,509,994	5,645,401	98%	5,645,401	(135,407)	98%
	<u>23,566,825</u>	<u>24,145,975</u>	98%	<u>24,145,975</u>	<u>(579,150)</u>	98%
Public Transportation	<u>6,733,379</u>	<u>6,898,850</u>	98%	<u>6,898,850</u>	<u>(165,471)</u>	98%
Administration allocation of Tax Revenue	511,500	511,500	100%	511,500	0	100%
Baptist Road RTA allocation of Tax Revenue	(22,000)	0	N/A	0	(22,000)	N/A
Total Tax Revenue	<u>67,823,285</u>	<u>69,500,000</u>	98%	<u>69,500,000</u>	<u>(1,676,715)</u>	98%
Other Revenue Sources:						
Public Transportation fare revenue	1,250,807	961,486	130%	961,486	289,321	130%
Interest Earnings	1,416,799	2,000,000	71%	2,000,000	(583,201)	71%
Gross Revenue	<u>70,490,891</u>	<u>72,461,486</u>	97%	<u>72,461,486</u>	<u>(1,970,595)</u>	97%
State Tax Collection Fees	<u>(171,941)</u>	<u>(250,000)</u>	69%	<u>(250,000)</u>	<u>(78,059)</u>	69%
Net Revenue	<u>70,318,950</u>	<u>72,211,486</u>	97%	<u>72,211,486</u>	<u>(1,892,536)</u>	97%

Expenditures						
Administrative	429,896	511,500	84%	511,500	81,604	84%
Public Transportation	8,480,900	10,288,611	82%	10,288,611	1,807,711	82%
Maintenance						
Town of Green Mountain Falls	41,652	41,652	100%	41,652	0	100%
City of Manitou Springs	336,577	339,450	99%	339,450	2,873	99%
City of Colorado Springs	15,508,911	18,346,415	85%	18,346,416	2,837,505	85%
El Paso County	6,272,428	7,384,490	85%	7,384,490	1,112,062	85%
	<u>22,159,568</u>	<u>26,112,007</u>	85%	<u>26,112,008</u>	<u>3,952,440</u>	85%

	Year-to-date Actual	Year-to-date Budget	Percent of YTD Budget Complete	Annual Budget Including Carryover	Actual Difference from Budget	Percent of Budget Complete
Capital						
<i>Town of Green Mountain Falls</i>						
Ute Pass Widening	297,861	304,320	98%	304,320	6,459	98%
<i>City of Manitou Springs</i>						
Manitou Ave Improvements	189,557	1,524,505	12%	1,524,505	1,334,948	12%
<i>City of Colorado Springs</i>						
Austin Bluffs Interchange	14,368,676	15,822,192	91%	15,822,192	1,453,516	91%
S. Metro Accessibility, Phase I	6,496,963	13,530,280	48%	13,530,280	7,033,317	48%
I-25 Interchange Companion Projects	56,720	150,000	38%	150,000	93,280	38%
Congestion/Incident Mgmt Signal Improvement	407,374	432,032	94%	432,032	24,658	94%
Powers Blvd Right of Way Protection	1,526,292	6,005,542	25%	6,005,542	4,479,250	25%
Roadway Safety and Traffic Operations	392,515	1,106,259	35%	1,106,259	713,744	35%
Vincent Drive Bridge	159,079	1,528,182	10%	1,528,182	1,369,103	10%
Pikes Peak Greenway Improvements	0	408,243	0%	408,243	408,243	0%
Woodmen Rd Widening & Interchange	356,385	16,888,737	2%	16,888,737	16,532,352	2%
On-Street Bikeway Improvements	29,942	182,097	16%	182,097	152,155	16%
Constitution/Circle Drive Improvements	1,182,447	1,264,786	93%	1,264,786	82,339	93%
Fillmore/El Paso Street Improvements	143,436	210,589	68%	210,589	67,153	68%
Vincent Drive Extension	157,038	1,471,818	11%	1,471,818	1,314,780	11%
Academy Blvd./Pikes Peak Improvements	557	557	100%	557	0	100%
Cimarron Street Bridge	5,603,469	6,567,890	85%	6,567,890	964,421	85%
30th Street Corridor Safety Improvements	22,757	63,767	36%	63,767	41,010	36%
	30,903,650	65,632,971	47%	65,632,971	34,729,321	47%
<i>El Paso County</i>						
County Line Road Upgrade	156,879	348,263	45%	348,263	191,384	45%
Hodgen Rd upgrade to Arterial	279,524	1,167,529	24%	1,167,529	888,005	24%
Baptist Rd Widening(I-25 to Tari Dr.)	0	209,110	0%	209,110	209,110	0%
Struthers Extension/Jackson Creek	3,229,458	3,254,239	99%	3,254,239	24,781	99%
Marksheffel Road Widening & Extension	530,362	2,915,014	18%	2,915,014	2,384,652	18%
S. Metro Accessibility, Phase I	11,774,836	11,770,523	100%	11,770,523	(4,313)	100%
Meridian Rd Ext. (Falcon to US 24)	122,636	480,039	26%	480,039	357,403	26%
Meridian Rd Ext. (Woodmen to Rex Drive)	218,874	1,200,000	18%	1,200,000	981,126	18%
	16,312,569	21,344,717	76%	21,344,717	5,032,148	76%
Total Capital Expenditures	47,703,637	88,806,513	54%	88,806,513	41,102,876	54%
Total Projects and Transportation expenses	78,344,105	125,207,131	63%	125,207,132	46,863,027	63%
Total Expenditures	78,774,001	125,718,631	63%	125,718,632	46,944,631	63%
Revenue Over/(Under) Expenditures	(8,455,051)	(53,507,145)	16%	(53,507,146)	45,052,095	16%
Carryover		54,320,890		54,320,890	(54,320,890)	
Net Activity including prior year carryover	(8,455,051)	813,745	-1039%	813,744	(9,268,795)	-15%
Reserves:						
Board Appropriation of reserves	210,909	210,909	100%	210,909	0	100%
Reserve balance adjustment to 10% of budget	272,924	272,924	100%	272,924	0	100%
Replenish Reserve for prior year appropriation	(1,297,577)	(1,297,577)	100%	(1,297,577)	0	100%
Net Reserve balance adjustment	(813,744)	(813,744)	100%	(813,744)	0	100%
Net Activity Less Reserve adjustment	(\$9,268,795)	\$0	N/A	\$0	(\$9,268,795)	N/A

¹ Tax revenues from the State are received two months after the reported month. This statement includes December 2008 tax receipts.